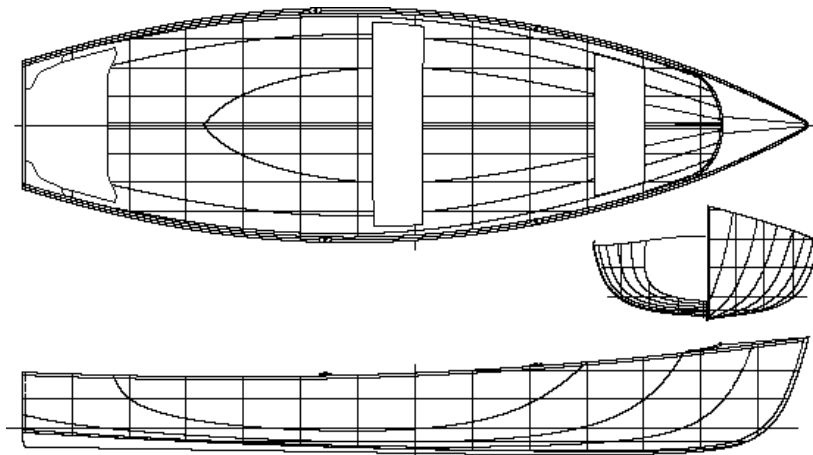


TRADITIONAL SKIFF FOR OAR & OUTBOARD

This sweet little skiff was built by the Rice Lake Boat Works during the transition from muscle power to the outboard. Sure to be a very useful boat at the cottage for fishing, rowing or just knocking about. It is one of the most stable boats we offer and will row well with up to three adults on board or a whole fleet of youngsters. A small outboard or electric motor will efficiently propel the boat for trolling, bird watching or just getting home a little faster. The lines were re-faired by Steve Killing keeping the character of the sheer, body sections and distinctive transom stern.

Rice Lake Traditional outboard skiff



SPECIFICATIONS

- Length 13'9"
- Maximum beam 48"
- Beam waterline 38"
- Beam gunnel 48"
- Bow height 19"
- Centre depth 16"
- Draft 4.8"
- Displacement 400 lbs.
- Wetted surface 30.7 sq.ft.
- Weight to immerse 154 lb/in
- Prismatic coefficient 0.587
- Weight 70-90 lbs.
- Stability Factor 169
- Optimum capacity 180-600 lbs.

Lines recorded by Ted Moores, 1992
© Drawn by Steve Killing
Steve Killing Yacht Design
P.O. Midland, Ontario L4R 4P4